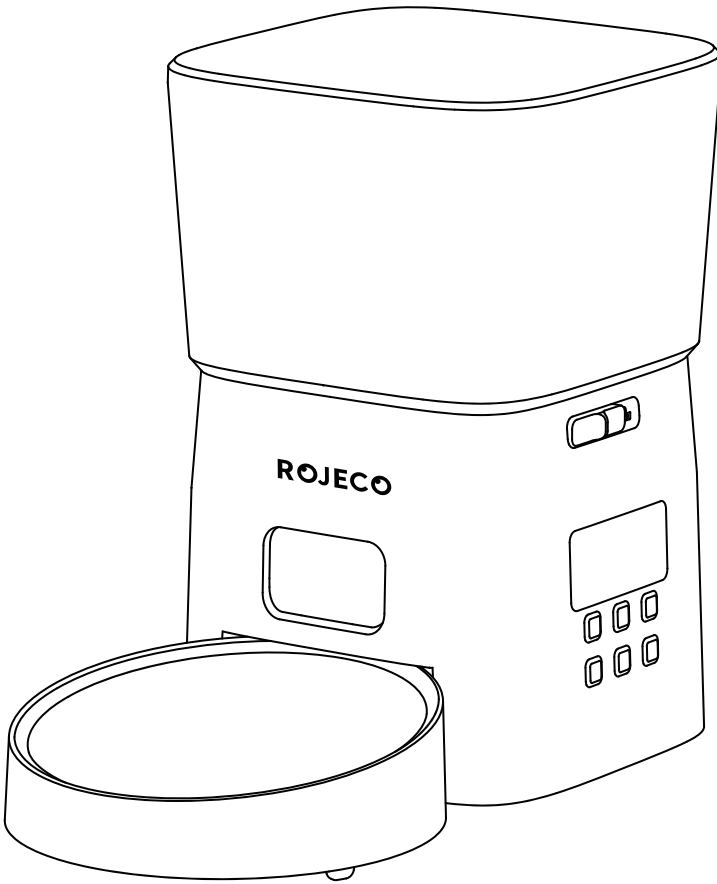


**ROJECO**

# Automatic Pet Feeder

## User Manual



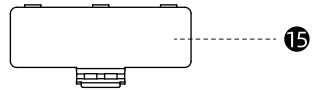
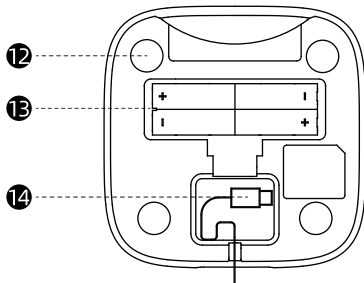
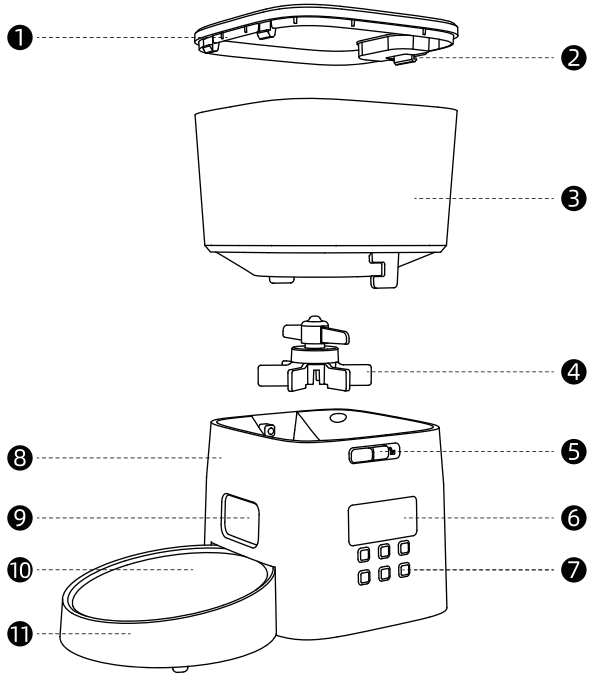
**Model: RWSQ-02**

Please read this manual carefully before use.

# Product Description

## Front View

1. Lid
2. Lid Lock
3. Food Tank
4. Rotor
5. Food Tank Lock
6. LED Display
7. Button
8. Tank Base
9. Food Outlet
10. Stainless Steel Bowl
11. Bowl Tray

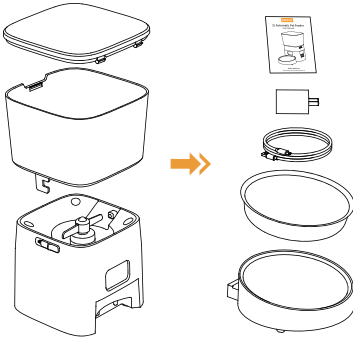


## Bottom View

12. Non-slip Rubber Pad
13. Battery Compartment
14. USB-C Power Port
15. Battery Compartment Cover

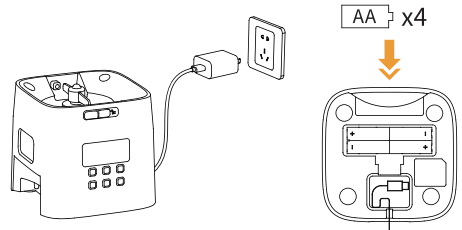
# How To Install

1. Remove the components on the tank base.

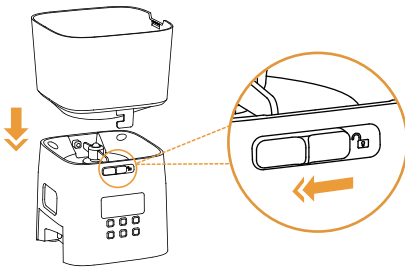


2. Plug in the power adapter. If you want, install 4\*AA alkaline batteries (Not included) in case of a power failure.

Note: The LED display will not stay on when only using batteries, But the programmed meals will dispensing normally. The LED screen will light up when you press any button.

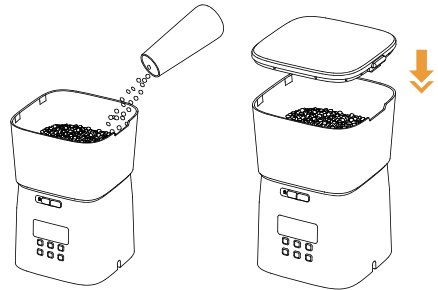


3. Install the food tank, then slide the lock of the food tank to the left to lock it.

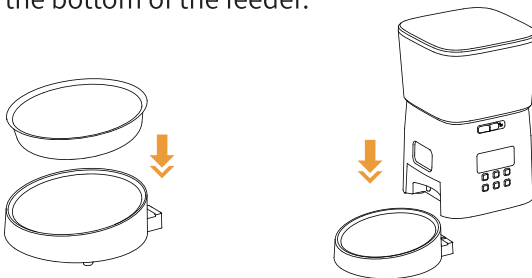


4. Fill the food tank with your pet's favorite dry food, Smooth the food and put the lid on.

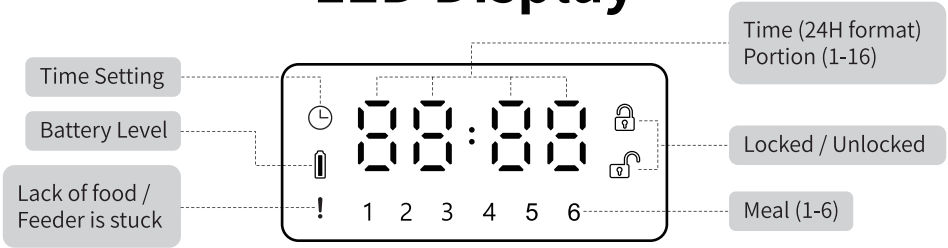
Note: Suitable for dry food with kibble size ranging from 2-15mm(0.07-0.6in) in diameter. Larger kibble may get stuck at the food outlet.









5. Place stainless steel bowl into the food tray. Lift feeder and slide the holder into the groove on the bottom of the feeder.



# LED Display



## Button Quick Guide

Button	Operation
 <b>Lock/Unlock</b>	Press and hold for 3s to unlock other buttons.
 <b>Return</b>	Press return to the previous setting.
 <b>Manual</b>	Press once to dispense one portion of food, press multiple times in a row will dispense multiple portions of food.
 <b>Setting/OK</b>	Unlocked Mode: 1. Long press for 3s to set the current time or exit the setting mode. 2. Short press to set up the feeding plan. 3. Short press to confirm and enter the next step setting.
 <b>Up</b>	Setting Mode: Short press to increase the value, Press and hold for quick adjustments. Locked Mode: View previous feeding plan.
 <b>Down</b>	Setting Mode: Short press to decrease the value, Press and hold for quick adjustments. Locked Mode: View next feeding plan.

Note: (  ) Light up when the batteries are installed, if flashing red it means low battery level.



# Program Setting

## Time Setting

1. After the feeder is powered on, press and hold (🔒) for 3s to unlock other buttons and screen.



2. Press (⚙️) for 3s to enter the Current Time Setting, (🕒) light up and hour digit flashes. Press (▲)/(▼) to set the hour and press (⚙️) to confirm.



3. Press (▲)/(▼) to set the minute and press (⚙️) to confirm.



Note: The screen will be locked automatically after 60s without operating.

## Meal Setting

1. After setting up the current time, press (⚙️) to enter Meal 1 setting, the icon 1 light up and hour digit flashes.



2. Press (▲)/(▼) to set the hour and press (⚙️) to confirm.



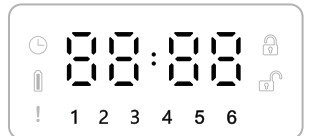
3. Press (▲)/(▼) to set the minute and press (⚙️) to confirm. The 1st meal time setting is complete.



4. Press (⚙️) to enter portion setting. Press (▲)/(▼) to setting the portions (Max 16), press (⚙️) to confirm. The 1st meal feeding plan setup complete.



5. Repeat the above step 2-4 to set up feeding plan 2-6 if needed. The feeder supports up to 6 scheduled meals per day.



Note: Set the portion to 0 and the meal will be canceled.

## Reset

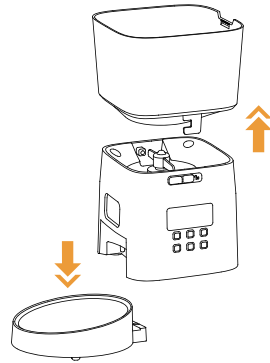
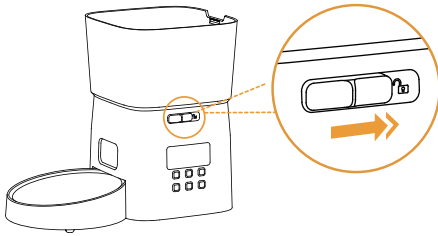
Press and hold (⌂)+(▲) for 3s, the feeder will reset and restore factory settings.

## Manual Feeding

Press (👉) once to dispense one portion of food, press multiple times in a row will dispense multiple portions of food.

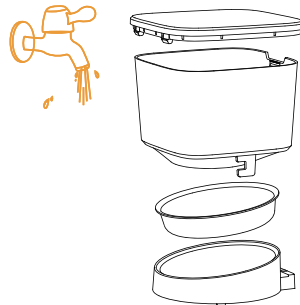
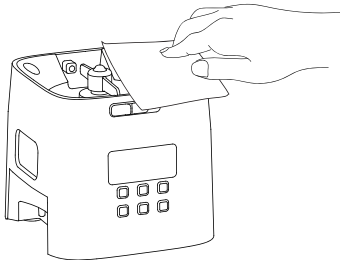
# Disassemble For Cleaning

1. Slide the lock of the food tank to the right to unlock it.
2. Lift the food tank and the bowl.



The base unit cannot be submerged in water. just use cloth to wipe up.

Bowl tray, stainless bowl, hopper and lid can be washed by water.



# Specifications

Model	RWSQ-02	Battery Power	4 x AA alkaline batteries
Input	AC 100-240V 50/60Hz	Dimensions	250*166*162mm / 10*6.5*6.4in
Capacity	2L	Weight	1kg / 2.2lbs

## Troubleshooting

Problem	Solution
No response to pressing any buttons?	<p>This feeder is a low-energy product. The screen will lock and goes off when there's no operation in 60s. The programmed meal will dispensing with the screen off.</p> <p>The LED screen will light up but stay locked when you press any button. Please press and hold the "🔒" button for 3s to unlock the screen.</p>
"🔋" flashing red	It means low battery level, please replace the batteries in time.
"!" flashing red	<ol style="list-style-type: none"> <li>1) It means the food is out of storage. Please refill with food in time.</li> <li>2) It means the feeder is stuck. Please check whether there are foreign objects in the hopper or the food is too large.</li> </ol>
The feeder can't dispense food?	<ol style="list-style-type: none"> <li>1) Please be sure to fill in with dry food; kibble size should range from 0.16-0.47in / 4-12mm in diameter.</li> <li>2) Check whether there is too much food in the food tank and the food passage is blocked.</li> <li>3) Check whether any objects are put into the food tank by mistake, then check the rotor.</li> <li>4) Check whether it's at low battery level-whether the power adapter is connected or there is any power failure without battery installed.</li> <li>5) Check the feeder set and save the correct local time before setting the feeding schedule.</li> </ol> <p>If you follow the above all points, but the device still does not distribute food on schedule, please contact us for further assistance.</p>
Food volume for each portion is not the same?	The portions may vary at first few times and it doesn't mean a faulty equipment. After about feedings 6 times it should be almost same.